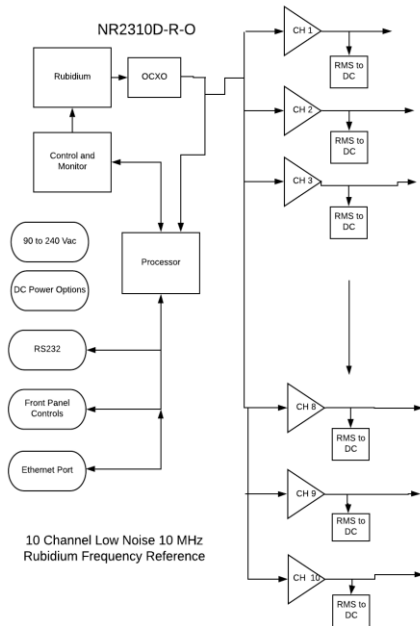


Company Datasheet #	NR2310D-R-O sma
Revision #:	C
Date:	032922

# NR2310D-RO

## 10MHz, Low Noise, 10 Channel Rubidium Reference with Networking Capability



### Networking

SNMP option

### Phase Noise

Offset Frequency (Hz)	Typical (dBc / Hz)
10	-130
100	-140
1K	-145
10k	-150

All channels are monitored for a fault condition and built in test monitors critical circuits which drives panel indicators as well as alarm relay that can be wired into an alarm panel. Low noise OCXO dominates phase noise performance.



